



Le GABION MONITORING ESBG 2015

Two monitoring experiences :

1) drying and rain influence of 4 different coatings on straw bales

- λ gypsum plaster,

- λ 2 earth + 1 gypsum plaster,

- λ CL

- λ NHL



2) Monitoring of an experimental building

Study of drying and rain
influence of 4 different
renders

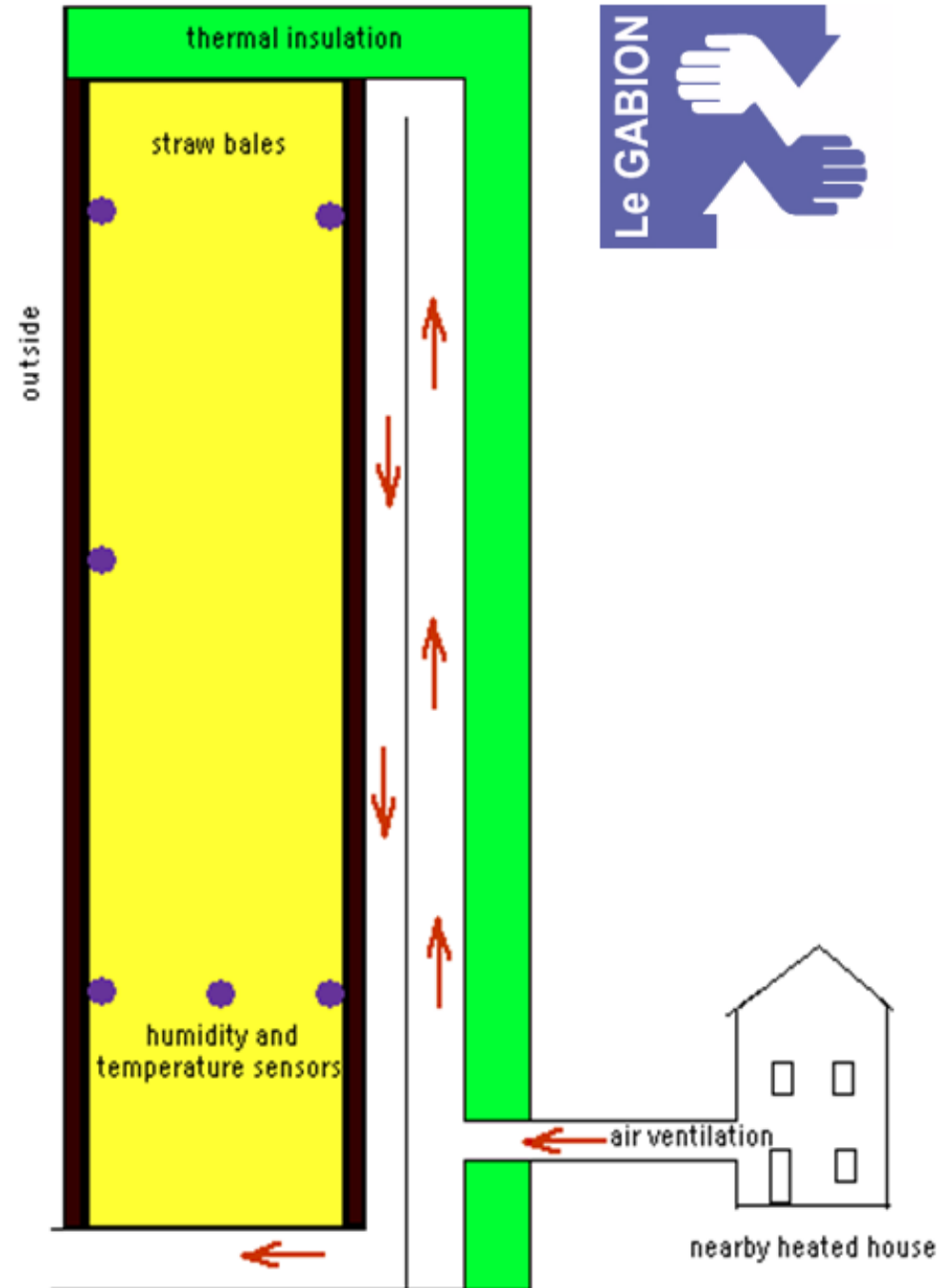
The inside and outside coatings were
done in two days, this brought
a lot of water in the straw.

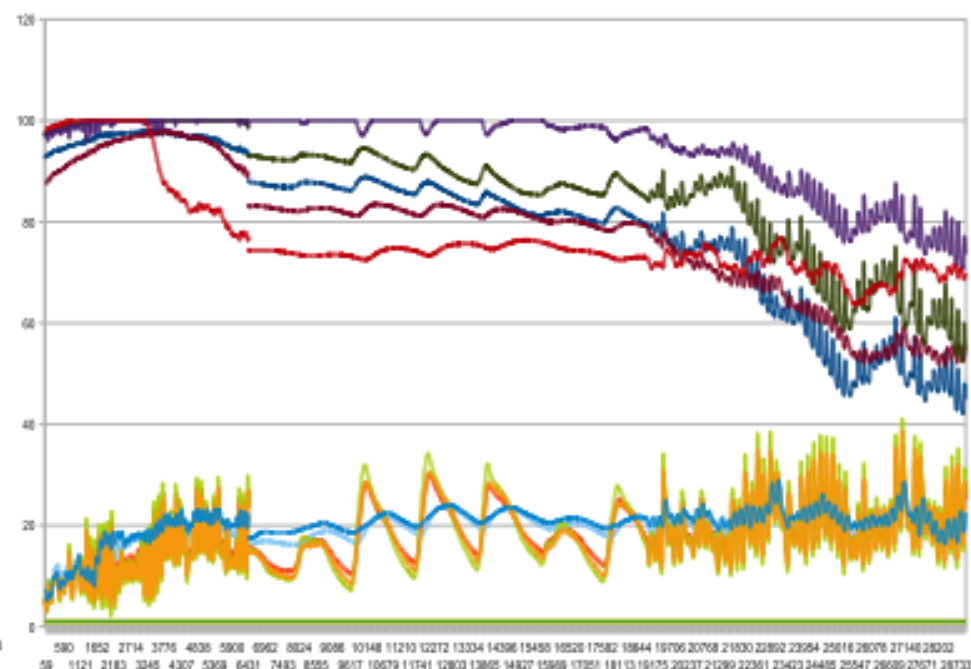
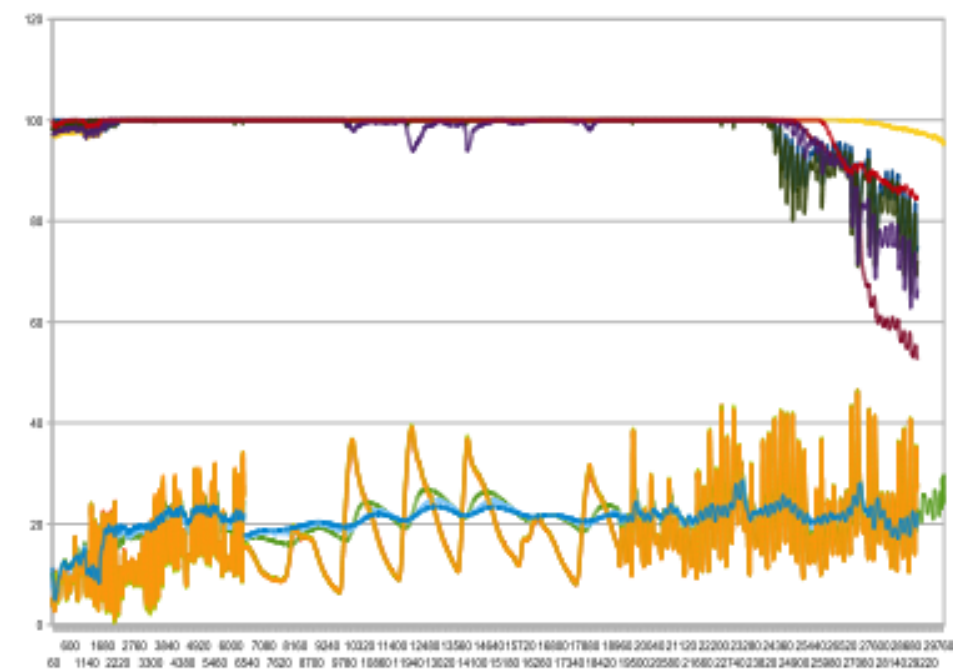
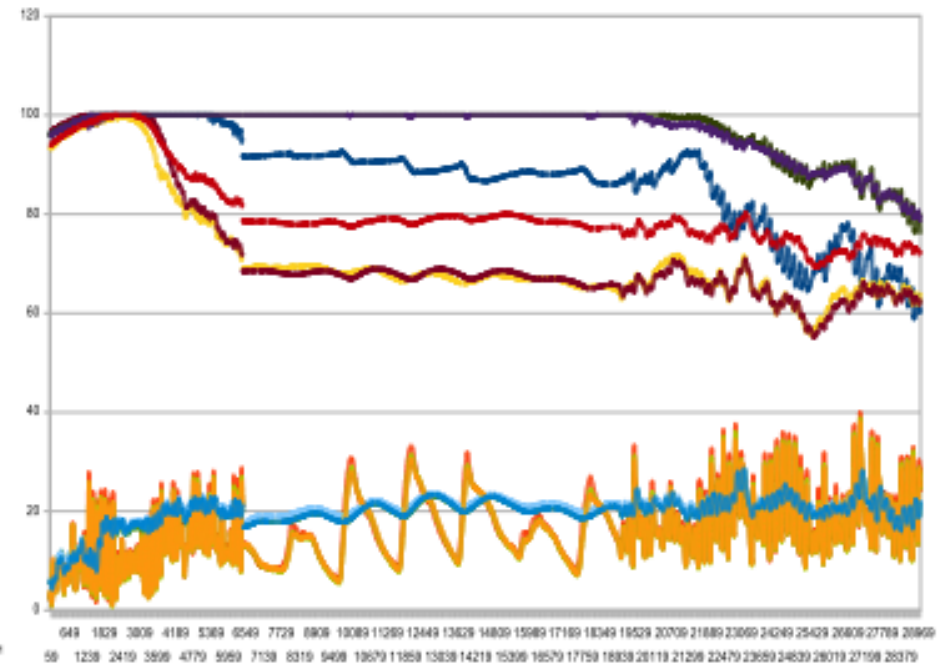
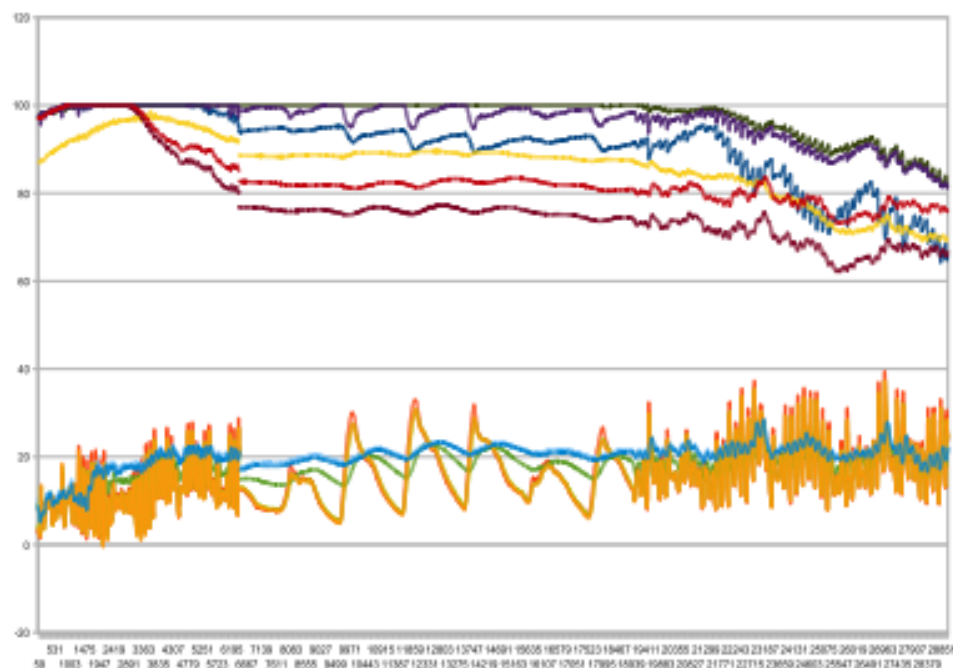


Study of drying and rain influence of 4 different coatings

Findings

- λ The most interesting findings
- λ were not expected
- λ Too many measures made it
- λ very difficult to analyze
- λ Straw will not start drying until
- λ the renders are dry !
- λ It is very interesting to compare
- λ the behavior of different elements
- λ when it can be done at the same
- λ time and under the same conditions





G



Monitoring of an experimental building



Monitoring of an experimental building



[stages](#)[construction
paille](#)[vidéos](#)[docs](#)[réalisa-
tions](#)[actions](#)[réseau](#)gabionorg.free.fr/Meteo

[Consultez le programme de tous les Stages de l'année](#)

Formations diplômantes

Ouvrier Professionnel en Eco Construction

Ouvrier Professionnel en Restauration du Patrimoine

approche de la rénovation thermique du bâti ancien et des matériaux sains

[Les prochains stages courts](#)

<u>Construction paille ossature bois</u>	Embrun	1 au 15 juin	T PUBLIC
<u>Maçonnerie : calade, murs pierre sèche et maçonnée</u>	Embrun	15 au 19 juin	T PUBLIC
<u>Enduits terre</u>	Embrun	22 au 26 juin	T PUBLIC

[Découvrez le site de la construction Paille PACA](#)



Le bâtiment expérimental du Gabion

L'Actu du Gabion

Nouveaux Films du
Gabion

Construction Paille
La Paille et la Poutre

RECRUTEMENT
Mr Pierre Sallé a été
recruté au poste de
directeur du Gabion

Notre installation **chauffage**
solaire en directe

Vie de L'association

Découvrez les interventions
aux assises PACA le la
construction Paille



Partenaire sur le 04

LA TECHNIQUE TERRE-PAILLE

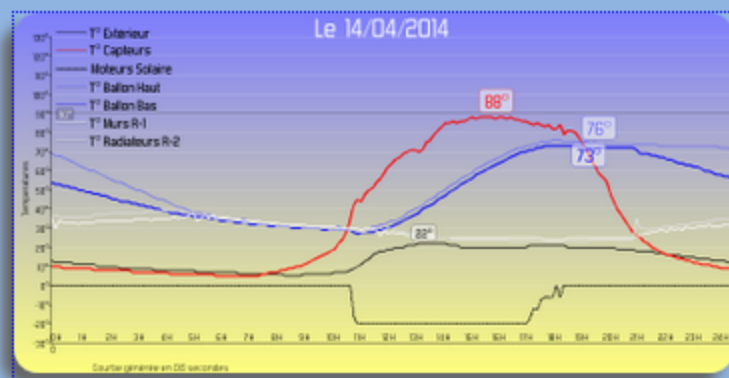


Monitoring of an experimental building

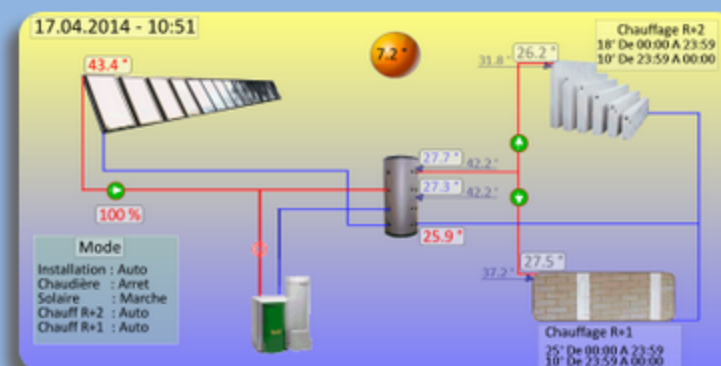


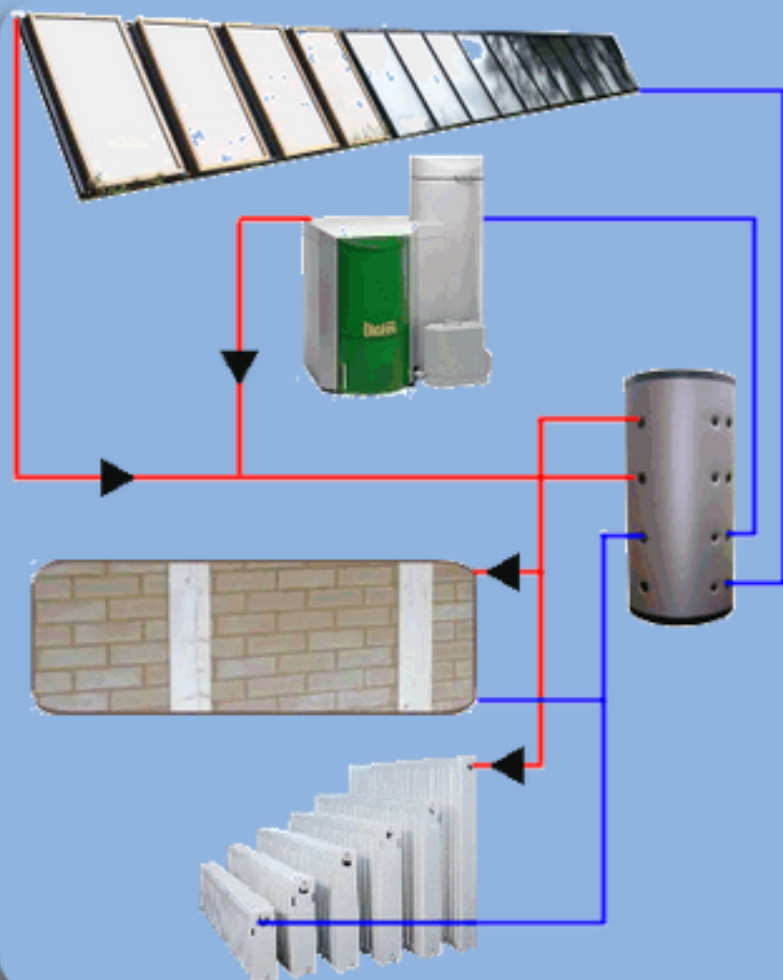
LE CHAUFFAGE SOLAIRE THERMIQUE DU GABION (05200)

Etude des données USB



Supervision





Créer le graphique

Effacer

☒ Température Extérieure

☐ Température Capteurs

☐ Moteurs solaire

☐ Économie Solaire basée sur la consommation chaudière

☐ Bruleur Chaudière

☐ Consommation Chaudière
comptée à partir d'une T° flamme > 100°

Températures du Ballon Tampon

☐ Haut

☐ Milieu

☐ Bas

☐ Température de Consigne R+1

☐ Température Mesurée R+1

☐ Température de Consigne R+2

☐ Température Mesurée R+2

Champ Expert

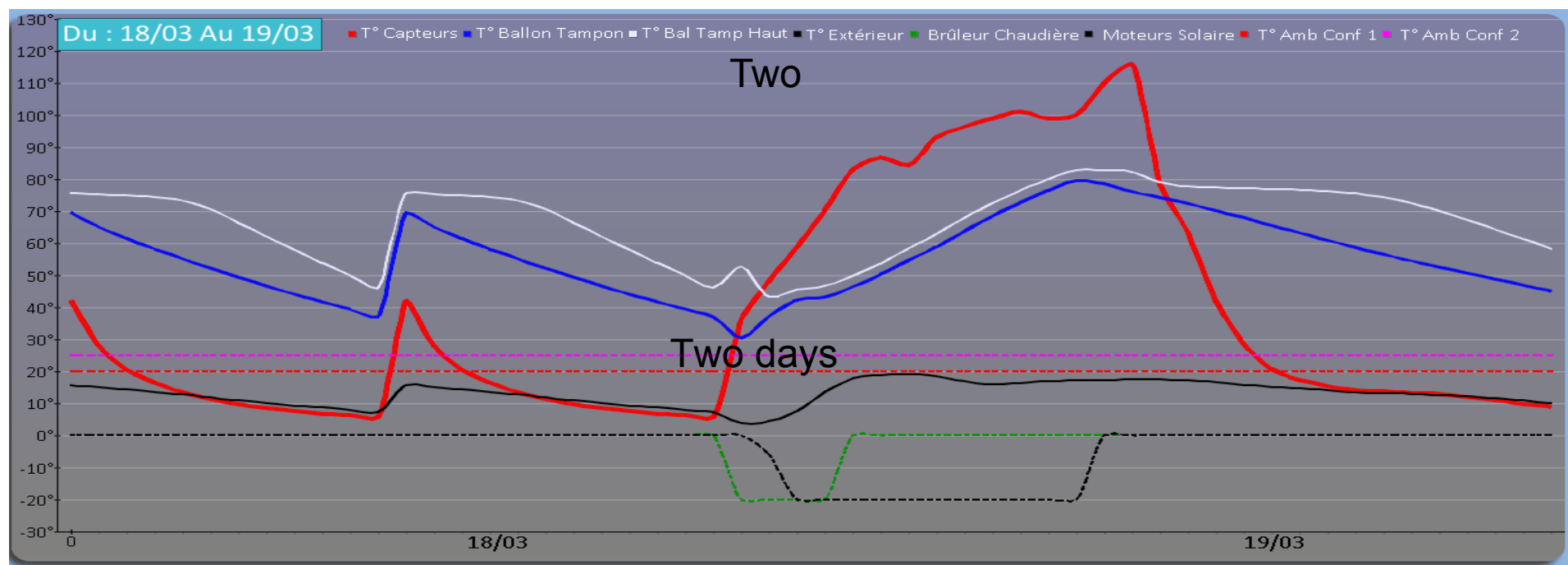
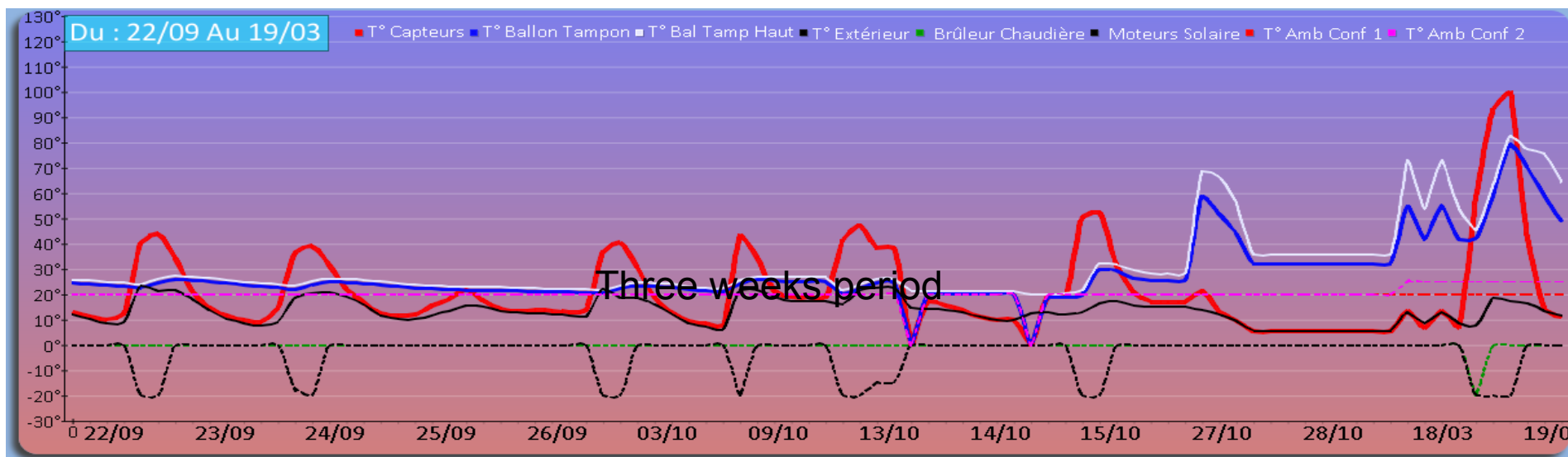


Fréquence des données, chaque 07 min

Choisir une date entre le 13/12/2013 et le 31/08/2014

Fourchette

31/08/2014



We would like to test the efficiency of our solar heating and it should help adjusting our heating system.

We are most interested in CO₂ recording in the 2 classrooms since we hope to avoid mechanical ventilation.

But the main reason is that we would like use this monitoring as a teaching support.

We are going to record

20 Temperature and humidity sensors all around the building

Probes inside the walls

The information given by the OKOfen pellet boiler

And the information given by the solar heating system.

All this data will be on real time access on our site

Monitoring of an experimental building

