



ESBG 2015

EUROPEAN STRAWBALE GATHERING MONTARGIS | PARIS



Strawbale Network: NL-2015

strobouw



nederland



Lifelong
Learning
Programme

Strawbale Network: NL-2015



Introduction

Wouter Klijn

Member of board of association since 2010
Partner of Leonardo group (STEP)
Straw bale trainer / advisor

Active with website and forum

Straw bale constructions & details &
building physics

wouter@strobouwer.nl



Strawbale Network: NL-2015



Introduction

Strobouw Nederland: what brings 2015>

Some buildings of the time-line in The Netherlands

- Why don't we need Straw bale Codes
- Do we keep on building as self builders
- Can we accelerate towards mainstream
- Do we need more training / education

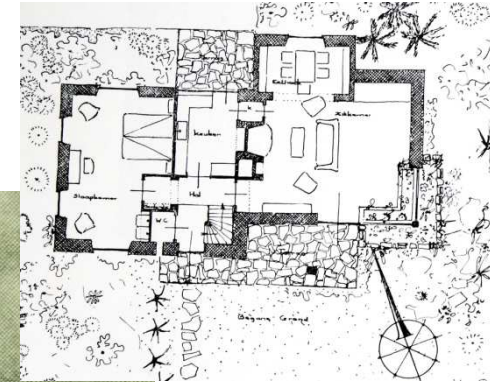


Strawbale Network: NL-2015



History . .

Heeze, Jan Gubbels: 1942 - 1944



No bricks?
Use straw!

Strawbale Network: NL-2015



History . .

Heeze: 1960 « renovation »

Demolition of first NL strawbale building.
Exchange of straw for bricks.



Strawbale Network: NL-2015



History . .

50 years later: Swalmen 1998: Main-stream: experimenting with straw



Time to start with
Straw experiments

Strawbale Network: NL-2015



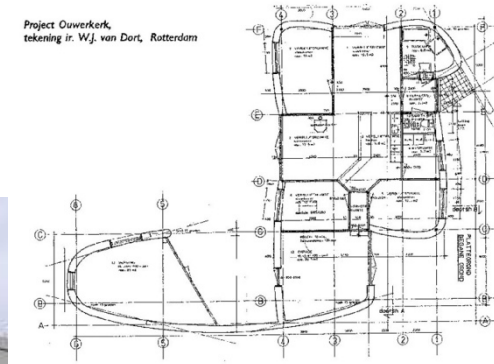
History . . 1998

Ouwerkerk, W.J. van Dort

First straw bale house with building permit



Project Ouwerkerk,
tekening ir. W.J. van Dort, Rotterdam



Steel inside the
straw.

First earth plaster,
exchanged with . . .
. . .lime plaster

Strawbale Network: NL-2015



History . . 1999

Koudum,



Strawbale Network: NL-2015



History . . 2002

Floriade, Hierden,

CUT technique
of Tom Rijven



Build as loadbearing without load,
with rod-ends through the bales

Strawbale Network: NL-2015



History . . 2003

Starting year of “strobouw-group”

Markelo: Robert W. Jansen



Selfbuilder

Steel inside the
straw is insulated.

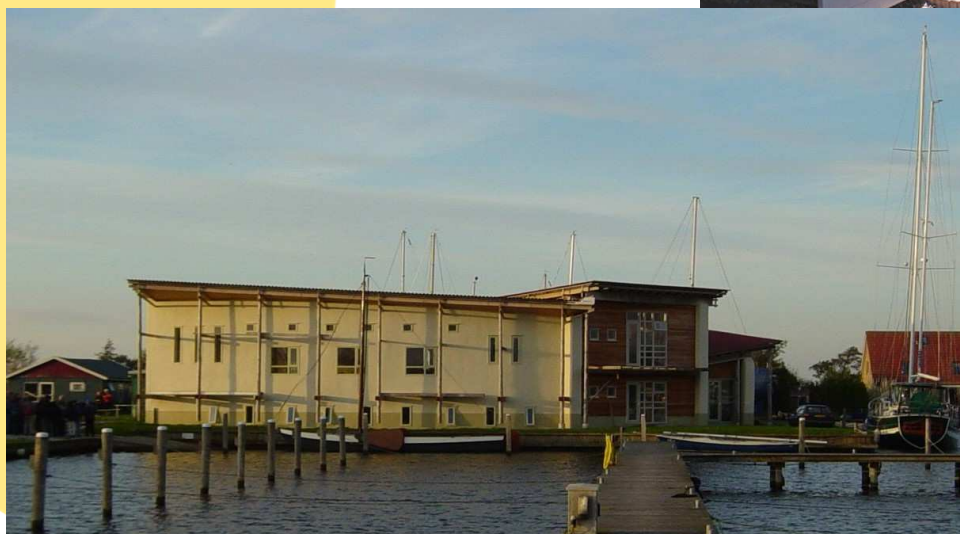
Strawbale Network: NL-2015



History . . 2004

Den Haag, Maarssen, Warns

Start of focus on:
lime plaster on the outside



Strawbale Network: NL-2015



History . . 2005

Amsterdam IJburg, Edwin Smit (Q-woning)



Wooden post (235x38)
in-between every bale on edge.

Strawbale Network: NL-2015



History . . 2006

Almere, Kampen, Emmeloord

Selfbuild, posts with bale on edge



Prefab: wood with fermacel at inside

Straw mounted at Outside with rope



Selfbuild: large wood construction, filled with bales flat between small double posts.

Strawbale Network: NL-2015



History . . 2008

Amsterdam IJburg, Rene Dalmeijer,
first prefab panel house



Strawbale Network: NL-2015



History . . 2009

Well, Veghel, Haps

:



Large construction,
straw flat



Two projects
in CUT: started
as workshop
with Tom Rijven



Strawbale Network: NL-2015



History . . 2010

Cuijk, Den Haag, Breda

Loadbearing temporary
Build with volunteers



Large construction



Bales on edge
Between double
posts

Strawbale Network: NL-2015



History . . 2011

Weesp, Wijhe,
Halle, Gaanderen

Four different
infill projects



Strawbale Network: NL-2015



History . . 2012

Bussum, Olst,
Amsterdam,



Prefab boxtype
straw panel.

Two infill straw
constructions



Strawbale Network: NL-2015



History . . 2013

Steenwijkerwold, Haaren

Infill bales flat between double posts
High performance in air-tightness



CUT technique semi loadbearing

Strawbale Network: NL-2015



History . . 2014

Nijmegen, Gelselaar,
Heerhugowaard

Loadbearing with
profiled bales



Two infill constructions with
posts and OSB at outside,
profiled straw bales at inside,
plastered.



Self made I-beams,
straw on edge covered
with softwood board

Strawbale Network: NL-2015



Actual . . 2015



architecten|en|en
architectes en ingenieurs



Strawbale Network: NL-2015



2016 > ?

Construction Systems over the last 10 years:

- Infill straw between posts (single, double, I-beam, etc)
- Only small development in prefab (self made panels, straw panels)
- Last year some projects with OSB at outside (higher risk?)
- Small scale development in straw-panels

Who is building with straw:

- Selfbuilders / with help of more experienced builders
- Main structure by contractor and infill by selfbuilders
- Only a few contractors build with straw

How do we learn to build with straw:

- Workshops, internet, books . . .
- ?



Strawbale Network: NL-2015



What can we do best?

**Our main objective as an association is:
« support development by creating
opportunities »**

My question for the ESBG-2015 is:
In what direction can I support NL?

Suggestions found at this meeting are:

.



Strawbale Network: NL-2015



Tank you



Any question or advise?

Please contact me at wouter@strobouwer.nl

www.strobouwer.nl

www.strobouwforum.nl

